

Catifa 46 / Counter stool h 64

Design by Lievore Altherr Molina, 2004

Art. 0486: Stool with sled base and upholstered h 64
 Art. 0476: Stool with sled base and upholstered h 64 with high backrest

Stool with chromed steel sled base and polypropylene shell upholstered in leather, faux leather, fabric or customer's fabric. Seat height 64 cm - 25 1/4", also with high backrest. Glides for wooden floors available upon request.



√clip.it.easy®

Dimensions*



* Files CAD 2D - 3D available for download at www.arper.com

Shipment details

Art.	kg	m ³	lb	ft ³
Art. 0486				
1 PCS = 2 boxes	11.80	0.305	25.960	10.770
4 PCS = 2 boxes	40.10	0.412	88.220	14.549
Art. 0476				
1 PCS = 2 boxes	12.60	0.338	27.720	11.936
4 PCS = 2 boxes	43.60	0.532	95.920	18.787

Base finishes



CRO
 Chrome
 finish steel

Stacking options

Art. 0486 with stacking glide
 FABRIC: up to 8 pcs. - LEATHER: up to 5 pcs.
 FABRIC: up to 8 pcs. - LEATHER: up to 5 pcs.

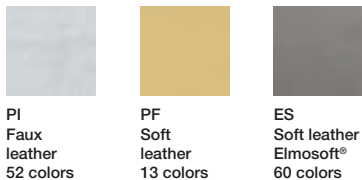
Art. 0476 with stacking glide
 FABRIC: up to 8 pcs. - LEATHER: up to 5 pcs.
 FABRIC: up to 8 pcs. - LEATHER: up to 5 pcs.

Materials

Carded In Fabrics kvadrat and No Stain



Carded In Faux leather, Soft leather and chrome free leather by elmo.



Catifa 46 / Counter stool h 64

Design by Lievore Altherr Molina, 2004

Graded In Fabrics by

kvadrat

www.kvadrat.dk

camira

www.camirafabrics.com



www.fidivi.com

Gabriel

www.gabriel.dk



www.spradling.eu

 **climatex**

www.climatex.com

Serge Ferrari

www.en.sergeferrari.com



www.en.sergeferrari.com

**DESIGN
TEX**

www.designtex.com

maharam

www.maharam.com

Visit the company website www.arper.com to view the available fabrics and swatches.

Catifa 46 / Counter stool h 64

Design by Lievore Altherr Molina, 2004

Art. 0484: Stool with sled base and upholstered in hard leather h 64 cm

Art. 0474: Stool with sled base and upholstered in hard leather h 64 cm with high backrest

Stool with chromed steel sled base and polypropylene shell upholstered in hard leather grade 1 or hard leather grade 2. Seat height 64 cm - 25 1/4", also with high backrest. Glides for wooden floors available upon request.



√clip.it.easy

Dimensions*



* Files CAD 2D - 3D available for download at www.arper.com

Shipment details

	kg	m ³	lb	ft ³
Art. 0484				
1 PCS = 2 boxes	11.80	0.305	25.960	10.770
4 PCS = 2 boxes	40.10	0.412	88.220	14.549
Art. 0474				
1 PCS = 2 boxes	11.30	0.316	24.860	11.159
4 PCS = 2 boxes	37.60	0.396	82.720	13.984

Base finishes



CRO
Chrome
finish steel

Materials

Polypropylene



PO
Polypropylene
10 colors



PO
Polypropylene
two colors
10 colors

Carded In Hard leather



CU
Hard leather
grade 1
4 colors



CT
Hard leather
grade 2
13 colors

Stacking options

Art. 0484 with stacking glide

Up to 5 pcs.

Art. 0474 with stacking glide

PO: fino a 10 PCS - CU and CT: up to 5 pcs.

Catifa 46 / Counter stool h 64

Design by Lievore Altherr Molina, 2004

Art. 0572: Stool with sled base and wood shell h 64 cm

Stool with chromed steel sled base and wood shell available in three colors (natural oak, bleached oak, wengé).

Seat height 64 cm - 25 1/4".

Glides for wooden floors available upon request.



clip.it.easy

Dimensions*



* Files CAD 2D - 3D available for download at www.arper.com

Shipment details

	kg	m ³	lb	ft ³
Art. 0572				
1 PCS = 2 boxes	10.50	0.314	23.150	11.088
4 PCS = 2 boxes	34.42	0.408	75.724	14.408

Base finishes



CRO
Chrome
finish steel

Stacking options

Art. 0572 with stacking glide
Up to 10 PCS

Materials

Wood



L
Wood
3 colors

Catifa 46 / Counter stool h 64

Design by Lievore Altherr Molina, 2004

Art. 0477: Stool with sled base and upholstery applied to the seat surface

Stool with chromed steel sled base and polypropylene shell upholstered in leather, faux leather, fabric or customer's fabric applied to the seat surface. Seat height 64 cm - 25 1/4". Glides for wooden floors available upon request.

Dimensions*



clip.it.easy®

* Files CAD 2D - 3D available for download at www.arper.com

Shipment details

Art. 0477	kg	m ³	lb	ft ³
1 PCS = 2 boxes	14.00	0.345	30.800	12.183
4 PCS = 2 boxes	45.04	0.460	99.088	16.244

Base finishes



CRO
Chrome
finish steel

Stacking options

Art. 0477 with stacking glide
FABRIC: up to 8 pcs. - LEATHER: up to 5 pcs.
FABRIC: up to 8 pcs. - LEATHER: up to 5 pcs.

Materials

Polypropylene



PO
Polypropylene
10 colors

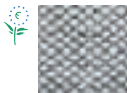
Carded In Fabrics kvadrat and No Stain



Topas 2
67 colors



Hallingdal 65
58 colors



Remix 2
49 colors



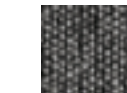
Cava 3
49 colors



Flora 2
33 colors



Pro 2
35 colors



Savanna
12 colors



Clara
27 colors



Tempo
22 colors



Divina MD
27 colors



Scuba
24 colors



No Stain
34 colors



Divina 3
56 colors



Divina
Melange 2
24 colors



Tonus 3
64 colors



Field
24 colors



Steelcut
Trio 2
49 colors



Sunniva
24 colors



Steelcut 2
43 colors



Pause 4
43 colors



Canvas
28 colors

Catifa 46 / Counter stool h 64

Design by Lievore Altherr Molina, 2004

Carded In Faux leather, Soft leather and Chrome Free leather **elmo**.



PI
Faux
leather
52 colors



PF
Soft
leather
13 colors



ES
Soft leather
Elmosoft®
60 colors

Graded In Fabrics by

kvadrat

www.kvadrat.dk

camira

www.camirafabrics.com



www.fidivi.com

Gabriel

www.gabriel.dk



www.spradling.eu

 **climatex**®

www.climatex.com

Serge Ferrari

www.en.sergeferrari.com



www.en.sergeferrari.com

**DESIGN
TEX**

www.designtex.com

maharam

www.maharam.com

Visit the company website www.arper.com to view the available fabrics and swatches.

arper

F +39 0422 791800

T +39 0422 7918

www.arper.com

Catifa 46 / Counter stool h 64

Design by Lievore Altherr Molina, 2004

Art. 0304: Stool with sled base and upholstery cushion applied to the seat surface

Stool with chromed steel sled base and polypropylene shell with cushion upholstered in leather, faux leather, fabric or customer's fabric applied to the seat surface. Seat height 64 cm - 25 1/4". Glides for wooden floors available upon request.



clip.it.easy®

Dimensions*



* Files CAD 2D - 3D available for download at www.arper.com

Shipment details

	kg	m ³	lb	ft ³
Art. 0304				
1 PCS = 2 boxes	11.30	0.316	24.860	11.159
4 PCS = 2 boxes	37.60	0.396	82.720	13.984

Base finishes



CRO
Chrome
finish steel

Stacking options

Art. 0304 with stacking glide
FABRIC: up to 8 pcs. - LEATHER: up to 5 pcs.
FABRIC: up to 8 pcs. - LEATHER: up to 5 pcs.

Materials

Polypropylene



PO
Polypropylene
10 colors



PO
Polypropylene
two colors
10 colors

Carded In Fabrics kvadrat and No Stain



Topas 2
67 colors



Hallingdal 65
58 colors



Remix 2
49 colors



Cava 3
49 colors



Flora 2
33 colors



Pro 2
35 colors



Savanna
12 colors



Clara
27 colors



Tempo
22 colors



Divina MD
27 colors



Scuba
24 colors



No Stain
34 colors



Divina 3
56 colors



Divina
Melange 2
24 colors



Tonus 3
64 colors



Field
24 colors



Steelcut
Trio 2
49 colors



Sunniva
24 colors



Steelcut 2
43 colors



Pause 4
43 colors



Canvas
28 colors

Catifa 46 / Counter stool h 64

Design by Lievore Altherr Molina, 2004

Carded In Faux leather, Soft leather and Chrome Free leather **elmo**.



PI
Faux
leather
52 colors



PF
Soft
leather
13 colors



ES
Soft leather
Elmosoft®
60 colors

Graded In Fabrics by

kvadrat

www.kvadrat.dk

camira

www.camirafabrics.com



www.fidivi.com

Gabriel

www.gabriel.dk



www.spradling.eu

 **climatex**®

www.climatex.com

Serge Ferrari

www.en.sergeferrari.com



www.en.sergeferrari.com

**DESIGN
TEX**

www.designtex.com

maharam

www.maharam.com

Visit the company website www.arper.com to view the available fabrics and swatches.

Catifa 46 / Counter stool h 64

Design by Lievore Altherr Molina, 2004

Art. 0320: Stool with sled base and shell with upholstered cover with high backrest

Stool with chromed steel sled base and white polypropylene shell upholstered with a removable non-washable cover in leather, faux leather, fabric or customer's fabric. Glides for wooden floors available upon request. Seat height 64 cm - 25 1/4".



clip.it.easy

Dimensions*



* Files CAD 2D - 3D available for download at www.arper.com

Shipment details

Art. 0320	kg	m ³	lb	ft ³
1 PCS = 2 boxes	12.60	0.338	27.720	11.936
4 PCS = 2 boxes	43.60	0.532	95.920	18.787

Base finishes



CRO
Chrome
finish steel

Stacking options

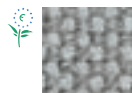
Art. 0320 with stacking glide
FABRIC: up to 8 pcs. - LEATHER: up to 5 pcs.
FABRIC: up to 8 pcs. - LEATHER: up to 5 pcs.

Materials

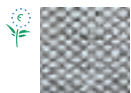
Carded In Fabrics **kvadrat** and No Stain



Topas 2
67 colors



Hallingdal 65
58 colors



Remix 2
49 colors



Cava 3
49 colors



Flora 2
33 colors



Pro 2
35 colors



Savanna
12 colors



Clara
27 colors



Tempo
22 colors



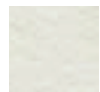
Divina MD
27 colors



Scuba
24 colors



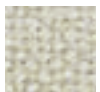
No Stain
34 colors



Divina 3
56 colors



Divina
Melange 2
24 colors



Tonus 3
64 colors



Field
24 colors



Steelcut
Trio 2
49 colors



Sunniva
24 colors



Steelcut 2
43 colors



Pause 4
43 colors



Canvas
28 colors

Carded In Faux leather, Soft leather and chrome free leather by **elmo**.



PI
Faux
leather
52 colors



PF
Soft
leather
13 colors



ES
Soft leather
Elmosoft®
60 colors

Catifa 46 / Counter stool h 64

Design by Lievore Altherr Molina, 2004

Graded In Fabrics by

kvadrat

www.kvadrat.dk

camira

www.camirafabrics.com



www.fidivi.com

Gabriel

www.gabriel.dk



www.spradling.eu

 **climatex**

www.climatex.com

Serge Ferrari

www.en.sergeferrari.com



www.en.sergeferrari.com

**DESIGN
TEX**

www.designtex.com

maharam

www.maharam.com

Visit the company website www.arper.com to view the available fabrics and swatches.

Catifa 46 / Counter stool h 64

Design by Lievore Altherr Molina, 2004



1



2



3



4



5



6



7



8



9



10



11

arper

- | | | | |
|---|--|----|---------|
| 1 | Cushion | 8 | Cover 1 |
| 2 | Polycarbonate glide with polyurethane insert | 9 | Cover 2 |
| 3 | Polycarbonate glide with felt insert | 10 | Cover 3 |
| 4 | Stacking glide | 11 | Cover 4 |
| 5 | Trolley | | |
| 6 | Stacking protection pad | | |
| 7 | Stacking protection pad and link | | |

F +39 0422 791800

T +39 0422 7918

www.arper.com

Catifa 46 / Counter stool h 64

Design by Lievore Altherr Molina, 2004

Fire retardant test



UK CONTRACT: BS7176-07 Medium Hazard: Fabric (Flora 2, Pro 2, Tonus 3, Topas 2, Hallingdal 65). Elmosoft, Faux leather. BS7176-07 Low Hazard: Soft leather. Faux leather. Fabric (Orange 2, Divina 3, Divina Melange 2, Divina MD).
 UK DOMESTIC: BS5852-1 Sch.4-5 Part1: Faux leather. Soft leather, Elmosoft. Fabric (Flora 2, Divina 3, Divina Melange 2, Divina MD, Hallingdal 65, Tonus 3, Topas 2). BS5852-1 Sch. 4 Part1: Fabric (Pro 2).
 USA Technical Bulletin 117: Fabric. Faux leather.



UK DOMESTIC: BS5852-1 Sch.5 Part1: Hard leather grade 1 and 2.
 BS5852/90 Sez.5 cigarette match: Polypropylene.



UK DOMESTIC: BS5852/90 Sez.5 cigarette match



UK CONTRACT: BS7176-07 Medium Hazard: Fabric (Flora 2, Pro 2, Tonus 3, Topas 2, Hallingdal 65). Elmosoft, Faux leather. BS7176-07 Low Hazard: Soft leather. Faux leather. Fabric (Orange 2, Divina 3, Divina Melange 2, Divina MD).
 UK DOMESTIC: BS5852-1 Sch.4-5 Part1: Faux leather. Soft leather, Elmosoft. Fabric (Flora 2, Divina 3, Divina Melange 2, Divina MD, Hallingdal 65, Tonus 3, Topas 2). BS5852-1 Sch. 4 Part1: Fabric (Pro 2).
 USA Technical Bulletin 117: Fabric. Faux leather.



UK CONTRACT: BS7176-07 Medium Hazard: Fabric (Flora 2, Pro 2, Tonus 3, Topas 2, Hallingdal 65). Elmosoft, Faux leather. BS7176-07 Low Hazard: Soft leather. Faux leather. Fabric (Orange 2, Divina 3, Divina Melange 2, Divina MD).
 UK DOMESTIC: BS5852-1 Sch.4-5 Part1: Faux leather. Soft leather, Elmosoft. Fabric (Flora 2, Divina 3, Divina Melange 2, Divina MD, Hallingdal 65, Tonus 3, Topas 2). BS5852-1 Sch. 4 Part1: Fabric (Pro 2).
 USA Technical Bulletin 117: Fabric. Faux leather.



arper

F +39 0422 791800

T +39 0422 7918

www.arper.com

* For more information on product's certification and environment documents visit www.arper.com or contact us at environment@arper.com

Catifa 46 / Counter stool h 64

Design by Lievore Altherr Molina, 2004

Fire retardant test



UK CONTRACT: BS7176-07 Medium Hazard: Fabric (Flora 2, Pro 2, Tonus 3, Topas 2, Hallingdal 65). Elmosoft, Faux leather. BS7176-07 Low Hazard: Soft leather. Faux leather. Fabric (Orange 2, Divina 3, Divina Melange 2, Divina MD).

UK DOMESTIC: BS5852-1 Sch.4-5 Part1: Faux leather. Soft leather, Elmosoft. Fabric (Flora 2, Divina 3, Divina Melange 2, Divina MD, Hallingdal 65, Tonus 3, Topas 2). BS5852-1 Sch. 4 Part1: Fabric (Pro 2).

USA Technical Bulletin 117: Fabric. Faux leather.



arper

F +39 0422 791800

T +39 0422 7918

www.arper.com

* For more information on product's certification and environment documents visit www.arper.com or contact us at environment@arper.com