

Duna 02 / 4 Wood Legs

Design by Lievore Altherr Molina, 2014

Art. 4203: wodden 4-leg base and polypropylene shell

Chair with wooden 4-leg base. Polypropylene shell available in six colors.



Dimensions*



* Files CAD 2D - 3D available for download at www.arper.com

Base Finishes



L0020
Bleached
oak



L0022
Natural
oak



L0021
Wengé



L0023
Teak effect

Shipment details

| Art. 4203 | kg | m ³ | lb | ft ³ |
|-----------------|-------|----------------|------|-----------------|
| 1 PCS = 2 boxes | 12.52 | 0.355 | 27.6 | 12.537 |
| 4 PCS = 2 boxes | 36,24 | 0.484 | 79.9 | 17.092 |

Materials

Polypropylene



PP
Polypropylene
6 colors

Duna 02 / 4 Wood Legs

Design by Lievore Altherr Molina, 2014

Art. 4223: wooden 4-leg base and polypropylene shell with cushion

Chair with wooden 4-leg base. Polypropylene shell available in six colors, with cushion in leather, faux leather, fabric or customer's own material applied on the seat surface.



Dimensions*



* Files CAD 2D - 3D available for download at www.arper.com

Base Finishes



L0020
Bleached
oak



L0022
Natural
oak



L0021
Wengé



L0023
Teak effect

Shipment details

| Art. 4223 | kg | m ³ | lb | ft ³ |
|-----------------|-------|----------------|------|-----------------|
| 1 PCS = 2 boxes | 12.52 | 0.355 | 27.6 | 12.537 |
| 4 PCS = 2 boxes | 36,24 | 0.484 | 79.9 | 17.092 |

Materials

Polypropylene

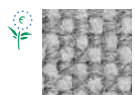


PP
Polypropylene
6 colors

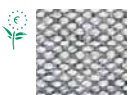
Carded In fabrics by **kvadrat** and No Stain



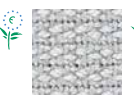
Topas 2



Hallingdal 65



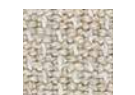
Remix 2



Cava 3



Pro 2



Clara 2



Tempo



Divina MD



Scuba



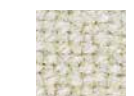
No Stain



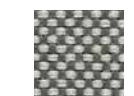
Divina 3



Divina
Melange 2



Tonus 3



Field



Steelcut Trio 2



Sunniva



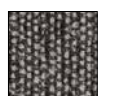
Steelcut 2



Pause 4



Canvas



Savanna

Duna 02 / 4 Wood Legs

Design by Lievore Altherr Molina, 2014

Carded In Faux leather, Soft leather and Chrome Free leather by **elmo**.



PI
Faux
leather



PF
Soft
leather



ES
Elmosoft®
Leather

Graded In Fabrics by

kvadrat

www.kvadrat.dk

camira

www.camirafabrics.com



www.fidivi.com

Gabriel

www.gabriel.dk



www.spradling.eu

 **climatex**

www.climatex.com

Serge Ferrari

www.en.sergeferrari.com



www.winter-creation.com

**DESIGN
TEX**

www.designtex.com

maharam

www.maharam.com

Visit the company website www.arper.com to view the available fabrics and swatches

Duna 02 / 4 Wood Legs

Design by Lievore Altherr Molina, 2014

Art. 4213: wooden 4-leg base and polypropylene shell with front-face upholstery

Chair with wooden 4-leg base and polypropylene shell available in six colors, with front upholstery in leather, faux leather, fabric or customer's own material.



Dimensions*



* Files CAD 2D - 3D available for download at www.arper.com

Base Finishes



L0020
Bleached
oak



L0022
Natural
oak



L0021
Wengé



L0023
Teak effect

Shipment details

| Art. 4213 | kg | m ³ | lb | ft ³ |
|-----------------|-------|----------------|------|-----------------|
| 1 PCS = 2 boxes | 12.52 | 0.355 | 27.6 | 12.537 |
| 4 PCS = 2 boxes | 36,24 | 0.484 | 79.9 | 17.092 |

Materials

Polypropylene

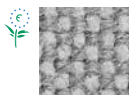


PP
Polypropylene
6 colors

Carded In fabrics by **kvadrat** and No Stain



Topas 2



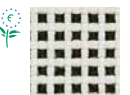
Hallingdal 65



Remix 2



Cava 3



Pro 2



Clara 2



Tempo



Divina MD



Scuba



No Stain



Divina 3



Divina
Melange 2



Tonus 3



Field



Steelcut Trio 2



Sunniva



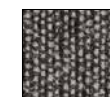
Steelcut 2



Pause 4



Canvas



Savanna

Duna 02 / 4 Wood Legs

Design by Lievore Altherr Molina, 2014

Carded In Faux leather, Soft leather and Chrome Free leather by **elmo**.



PI
Faux
leather



PF
Soft
leather



ES
Elmosoft®
Leather

Graded In Fabrics by

kvadrat

www.kvadrat.dk

camira

www.camirafabrics.com



www.fidivi.com

Gabriel

www.gabriel.dk



www.spradling.eu

 **climatex**®

www.climatex.com

Serge Ferrari

www.en.sergeferrari.com



www.winter-creation.com

**DESIGN
TEX**

www.designtex.com

maharam

www.maharam.com

Visit the company website www.arper.com to view the available fabrics and swatches

Duna 02 / 4 Wood Legs

Design by Lievore Altherr Molina, 2014

Art. 4233: wodden 4-leg base and fully upholstered shell

Chair with wooden 4-leg base. Shell fully upholstered in leather, faux leather, fabric or customer's own material.

Dimensions*



* Files CAD 2D - 3D available for download at www.arper.com



Base finishes



L0020
Bleached
oak



L0022
Natural
oak



L0021
Wengé



L0023
Teak effect

Shipment details

| Art. 4233 | kg | m ³ | lb | ft ³ |
|-----------------|-------|----------------|------|-----------------|
| 1 PCS = 2 boxes | 12.52 | 0.355 | 27.6 | 12.537 |
| 4 PCS = 2 boxes | 36,24 | 0.484 | 79.9 | 17.092 |

Materials

Carded In fabrics by **kvadrat** and No Stain



Topas 2



Hallingdal 65



Remix 2



Cava 3



Pro 2



Clara 2



Tempo



Divina MD



Scuba



No Stain



Divina 3



Divina
Melange 2



Tonus 3



Field



Steelcut Trio 2



Sunniva



Steelcut 2



Pause 4



Canvas



Savanna

Carded In Faux leather, Soft leather and Chrome Free leather by **elmo**.



PI
Faux
leather



PF
Soft
leather



ES
Elmosoft®
Leather

Duna 02 / 4 Wood Legs

Design by Lievore Altherr Molina, 2014

Graded In Fabrics by

kvadrat

www.kvadrat.dk

camira

www.camirafabrics.com



www.fidivi.com

Gabriel

www.gabriel.dk



www.spradling.eu

 **climatex**®

www.climatex.com

Serge Ferrari

www.en.sergeferrari.com



www.winter-creation.com

**DESIGN
TEX**

www.designtex.com

maharam

www.maharam.com

Visit the company website www.arper.com to view the available fabrics and swatches

arper

F +39 0422 791800

T +39 0422 7918

www.arper.com