

# Montana

## Kevi Office Chair

Iconic design in a  
dreamcoat of colours

Design by Jørgen Rasmussen



## Kevi office chair in mono colour from top to base

## KEVI OFFICE CHAIR — NEW COLOURS

*Kevi is designed in 1958 by architect Jørgen Rasmussen. It was originally designed for the company Kevi, but after the addition of the double-wheel caster in 1965, the chair quickly went on to become an international success.*

### THE KEVI OFFICE CHAIR

The classic swivel chair has set the scene across the world from universities in the UK to primary schools in Denmark and design offices in Japan. After more than 60 years on the market, the Kevi Office chair is still as relevant today as it was in 1958.

### MONO COLOUR KEVI OFFICE CHAIR

What better way to celebrate the iconic Kevi Office design than to dress it in a mono colour dreamcoat from top to base. The new version of Kevi office mono colour comes in 8 colours. Kevi Air mono colour comes in 5 colours. The colours are curated from the vast Montana palette reinvented by colour expert Margrethe Odgaard in 2019.

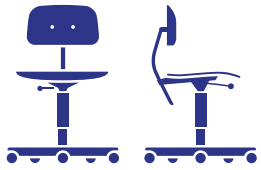
KEVI OFFICE MONO COLOUR IN RHUBARB, HOKKAIDO, AZURE, PINE, SHADOW, OYSTER, SNOW & BLACK.

KEVI AIR MONO COLOUR IN OREGANO, JUNIPER, CAMOMILE, SNOW & BLACK.

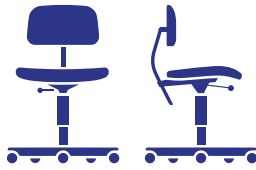


## Model overview & colour palettes

KEVI OFFICE CHAIR — NEW COLOURS



2533

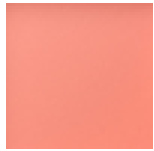


2534/2534U

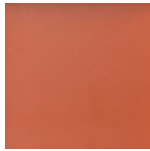


2532

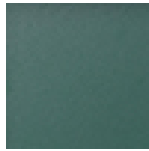
### Frame / Seat & backrest



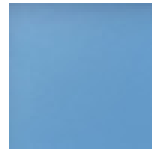
Rhubarb



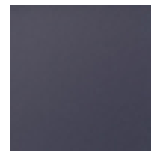
Hokkaido



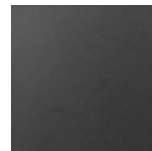
Pine



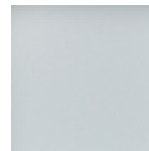
Azure



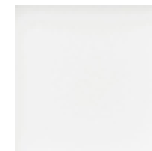
Shadow



Black

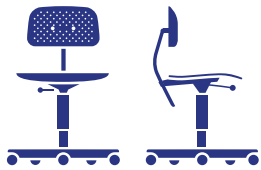


Oyster



Snow

### Kevi Air — Frame / Seat & backrest



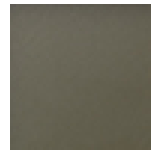
AIR



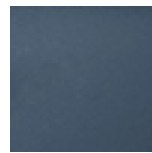
Snow



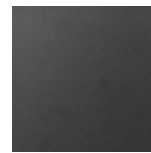
Camomile



Oregano



Juniper



Black

## Kevi 2533

KEVI OFFICE CHAIR — NEW COLOURS

### Frame

Swivel chair with powder coated aluminium base in 8 Montana colours: Rhubarb, Hokkaido, Azure, Pine, Shadow, Oyster, Snow and Black  
Also available in polished aluminium

### Dimensions

SH 38-51 x D 56 x W 56 cm

### Material

Seat and backrest in compression moulded veneer. Available in 8 Montana lazure colours and oak veneer

### On request

Customised lacquer NCS/RAL colours

### Certificates

DIN EN 1729

TÜV Certificate

GS Certificate



### THE KEVI CASTOR

After Jørgen Rasmussen developed the double wheel castor in 1965, the demand for the Kevi chair exploded. The new double wheel castor made Kevi more flexible with less wear on floor surfaces.

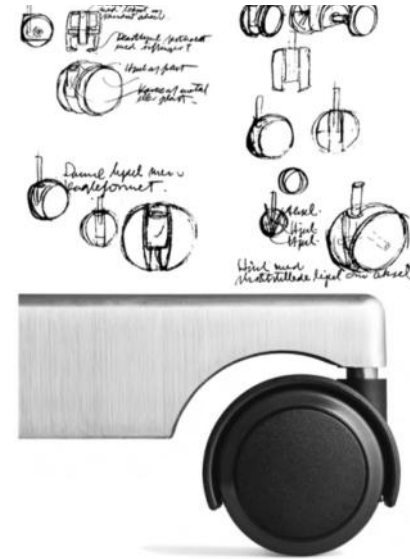
Today, the Danish double-wheel castor invention is used in many industrial designs heightening the well being of millions of people all over the world. The Kevi wheel is included in the Danish Ministry of Culture's "Cultural collections" due to its "positive impact on millions of people all over the world".

### USER DRIVEN ERGONOMICS

Acknowledging that humans are differently built, the user driven architect Jørgen Rasmussen added flexibility in the back part, allowing space and room for the user's lower back and spine. The height-adjustable function made the chair accessible for user's of all heights. The technical construction of the Kevi chair started an ergonomic revolution in both the work place, in schools, institutions and in the private home office.

*"The better you sit, the more you get done"*

– Jørgen Rasmussen





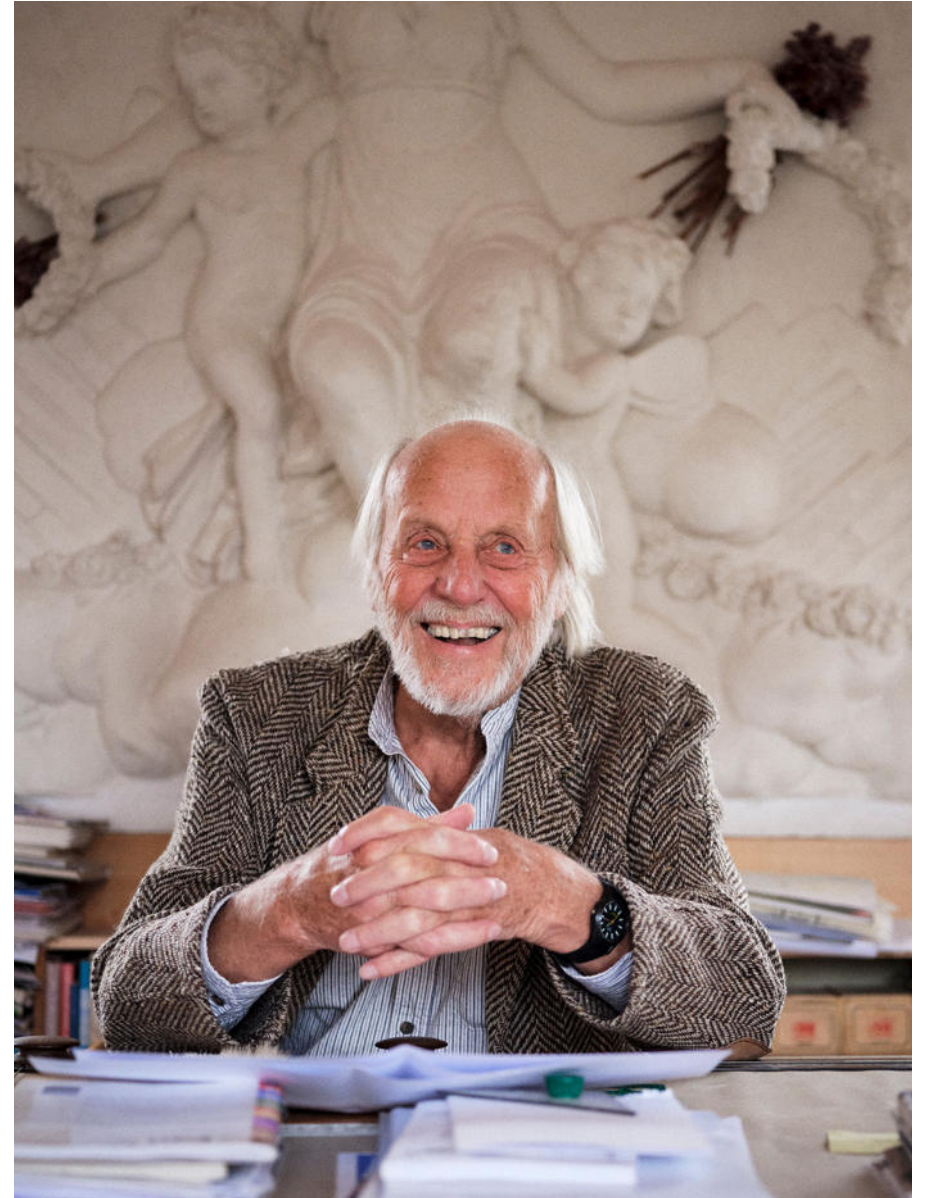
## About the designer

---

KEVI OFFICE CHAIR — NEW COLOURS

Jørgen Rasmussen (born 1931) graduated from the Royal Danish Academy of Fine Arts in 1955 and in 1957, Jørgen and his twin brother, Ib, started their own studio with a focus on single-family houses.

In 1958, Jørgen Rasmussen and his brother began working for Kevi A/S. The twins designed a villa for Kevi's CEO, Bent Harlang. They had good chemistry and they were asked to design chairs for the company. Primarily Jørgen took on this assignment and designed Kevi, which by the 1960s had become a multi-purpose work chair for both the office and home.









**Montana**